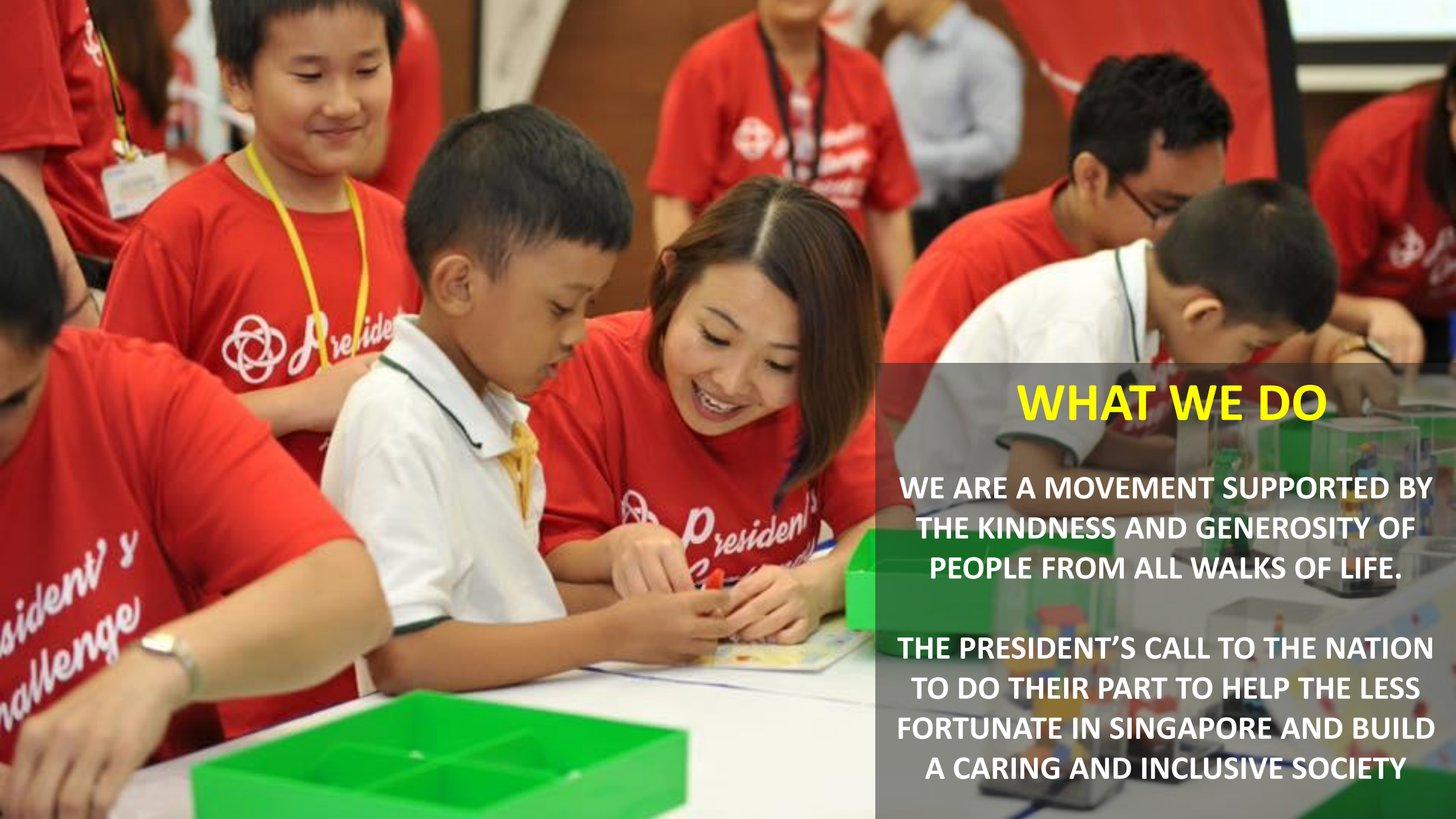




# PRESIDENT'S CHALLENGE

START SMALL DEAM BIG 2019





## WHAT WE DO

WE ARE A MOVEMENT SUPPORTED BY  
THE KINDNESS AND GENEROSITY OF  
PEOPLE FROM ALL WALKS OF LIFE.

THE PRESIDENT'S CALL TO THE NATION  
TO DO THEIR PART TO HELP THE LESS  
FORTUNATE IN SINGAPORE AND BUILD  
A CARING AND INCLUSIVE SOCIETY



2000

Established by the former President, the late Mr S R Nathan to bring the community together to help the **less fortunate**





2012

Continued by former President, Dr Tony Tan who expanded Challenge to encourage **Volunteerism** and **Social Enterprises**





2018

President Halimah Yacob expanded the Challenge by focusing on more customised and upstream support to help the most vulnerable change their circumstances through **skills upgrading**, **capacity building** and **empowerment**. She started the **Empowering for Life Fund** aims to support programmes in skills upgrading, capacity building and employment of vulnerable groups.





We partnered with ECDA to initiate the **Start Small Dream Big** in **2015** to encourage the young to give back to the community. Since then, the SSDB has continued to grow annually with big success.







**100% of donations go to the charities  
we support**



A person with a prosthetic leg is shown from the waist down, running on a grass field. They are wearing a white shirt with red trim, black shorts with green trim, red socks, and blue and yellow sneakers. They are holding two blue and white trekking poles. A yellow and black soccer ball is on the ground near their prosthetic leg. The background is a blurred green field with blue cones.

## Services We Support

**Children, Youth & Family**

**Disability**

**Eldercare**

**Mental Health**

**Rehabilitation**

**Healthcare**

**Empowering for Life Fund (ELF)**





# Take Action!

## Be part of the Challenge



### **DONATE**

You can make a **direct donation** to President's Challenge.



### **PARTNER WITH US**

You can be our fundraiser and organize a **fundraising event** of your own to raise funds for President's Challenge.



### **VOLUNTEER**

You can **volunteer your time and skills** to help our benefitting agencies within the community.



# Organize a charity bazaar or bake sale







**Visit the elderly at the Homes supported by President's Challenge**





**Distribution of groceries or useful items  
to homes of the less fortunate**



Meeting our service users and learning more about their different abilities.





# Donation Drive with Up-Cycled Items Go Green & Get Creative!





# WHAT IS REQUIRED?

## **If you are planning a FUNDRAISING event:**

- Contact President's Challenge Secretariat
- Apply for a Fundraising License if you are doing public fundraising
- Keep us informed of your fundraising activity
- Issue the cheque to “**President's Challenge 2020**”

## **For VOLUNTEERING matters:**

- Contact President's Challenge Secretariat
- Select a President's Challenge beneficiary to volunteer with
- Keep us informed of your volunteering activity







## CONTACT US

### **President's Challenge Secretariat**

c/o National Council of Social Service

170 Ghim Moh Road #01-02

Singapore 279621

Email: [pc\\_enquiry@ncss.gov.sg](mailto:pc_enquiry@ncss.gov.sg)

Website: <http://www.pc.org.sg>

